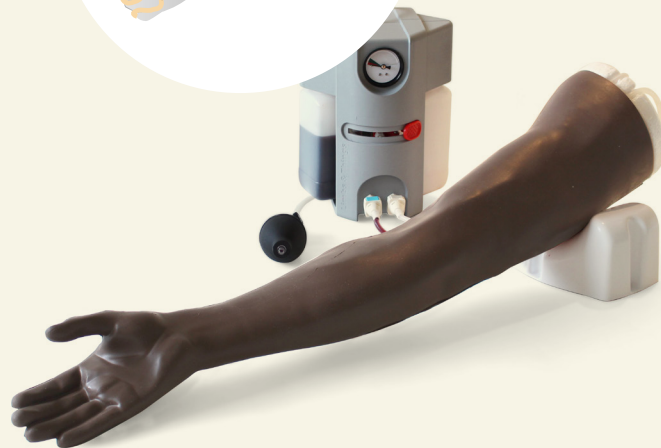
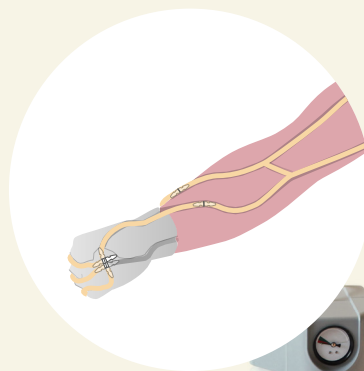




USER GUIDE



ADVANCED VENIPUNCTURE ARM



This product is available
in light and dark skin tones

70300

70301

FOR MORE SKILLS TRAINING PRODUCTS VISIT

limbsandthings.com

Sussex Street, St Philips, Bristol, BS2 0RA, UK | sales@limbsandthings.com | +44 (0) 117 311 0500

INDEX

PACKAGE SUPPLIED	3
SAFETY & CLEANING INSTRUCTIONS	4
SET UP	5
• FILLING THE FLUID UNIT	5
• FILLING THE VEINS	7
• EMPTYING THE VEINS	8
• EMPTYING THE FLUID UNIT	9
• REMOVING/RE-ATTACHING THE SKIN	11
• CHANGING THE VEINS	13
CARE & MAINTENANCE	14
• CLEANING THE VEINS	14
• BEFORE STORAGE	15

TAKE A LOOK
AT OUR **VIDEO**

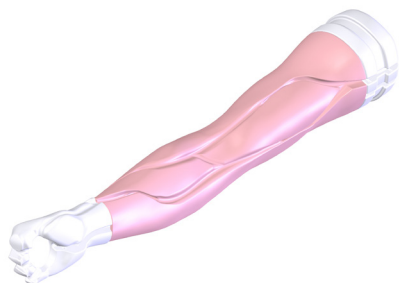


VISIT THE WEBSITE
limbsandthings.com

OR YOUTUBE CHANNEL
youtube.com/limbsandthings

PACKAGE
SUPPLIED

Venipuncture Arm



Venipuncture Arm Skin

70312 70311



Pressurized
Venipuncture
Supply
Concentrated

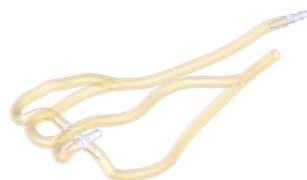
70315



ACF Vein Module

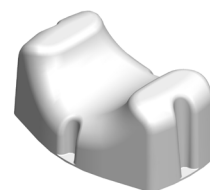


Metacarpal Vein Module



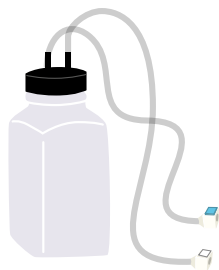
Venipuncture Arm Rest

00302



Refill bottle

00303

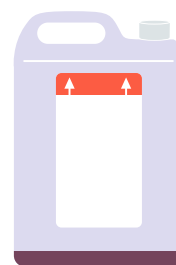


Lube Sachet (x3)



Concentrated Venous Blood

00020



Venipuncture Arm
Infusion Tube

00335



Micropore tape



SAFETY & CLEANING INSTRUCTIONS

READ THE SAFETY INSTRUCTIONS CAREFULLY BEFORE USING YOUR VENIPUNCTURE ARM

DO's



Follow all instructions. Keep these instructions. Heed all warnings.

Only use simulated blood supplied with this product. Use of non-recommended fluid products may weaken or damage the simulator.



Wear gloves at all times and remove all jewellery items. Sharp surfaces such as finger nails and rings can lead to damage of silicone parts.

Only use water-based lubricant.



Clean the product with a damp soft cloth or sponge, using only warm water with mild detergent, after every training session.

DON'Ts



Do not install near any heat sources, do not expose the product to flames or use near naked flame sources. Do not use flammable solvents near or on this product.

Do not set up the product near electrical appliances or items damaged by water.



Do not wear any jewellery items.

Do not disassemble the product or attempt to repair a faulty unit, please return the product to Limbs & Things for assessment and repair.



Do not leave the product filled with blood when putting into storage.

STORAGE & TRANSPORTATION



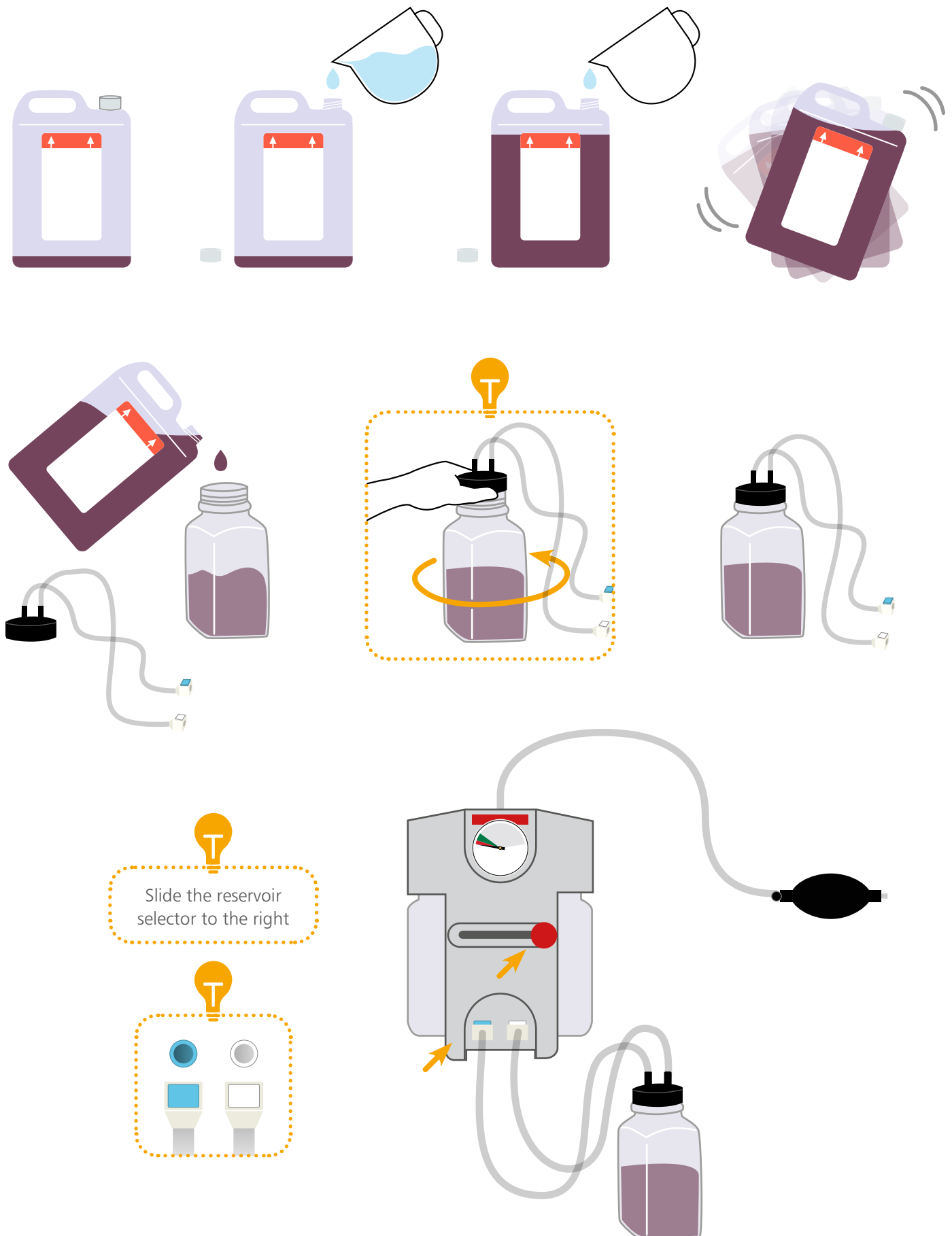
Always ensure that the products are properly packed and secured during transportation and storage in order to prevent personal injury or damage to the product.



VEINS CONTAIN LATEX

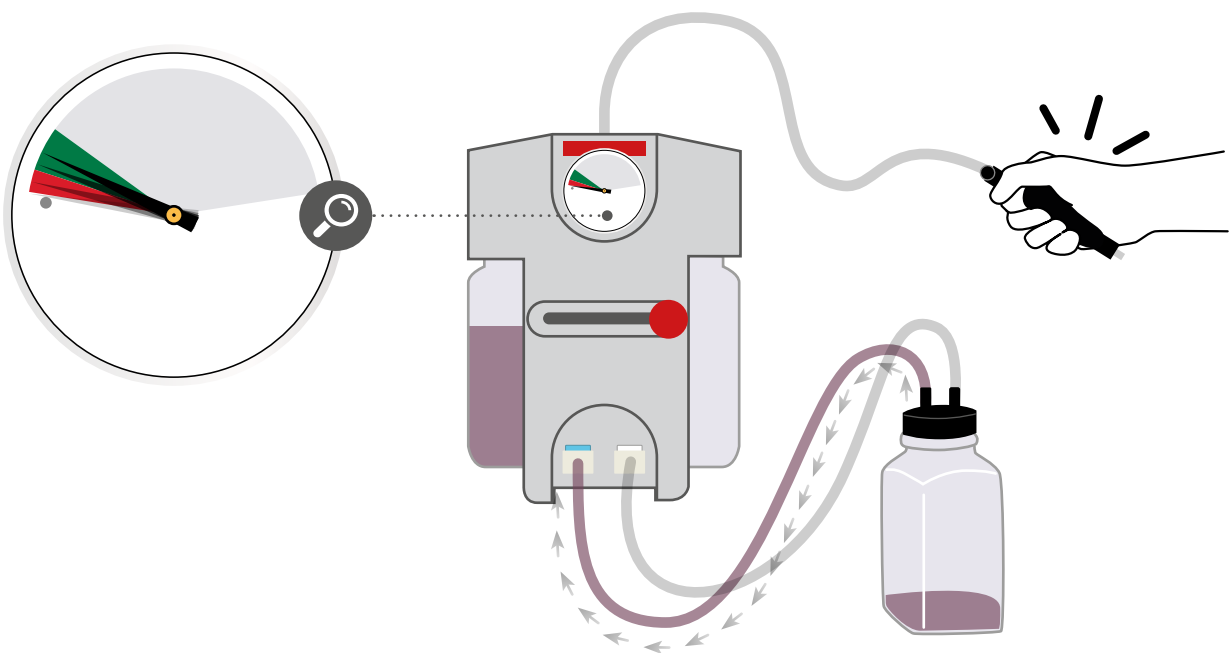
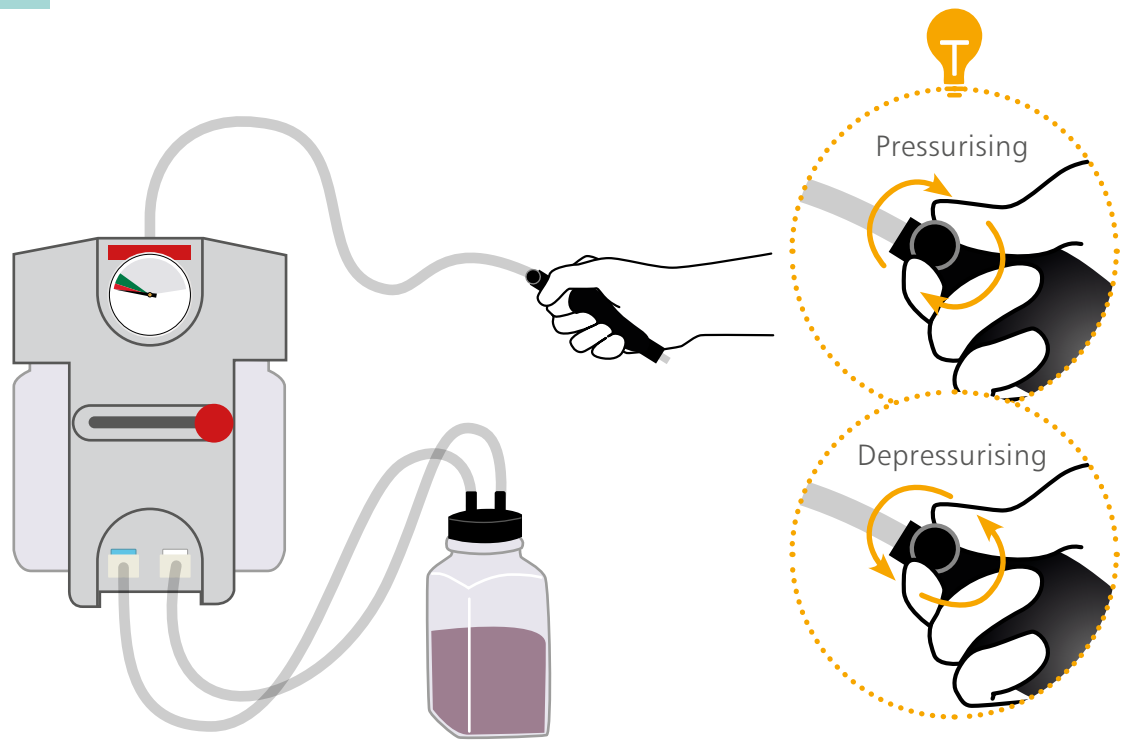
SET UP

FILLING THE FLUID UNIT



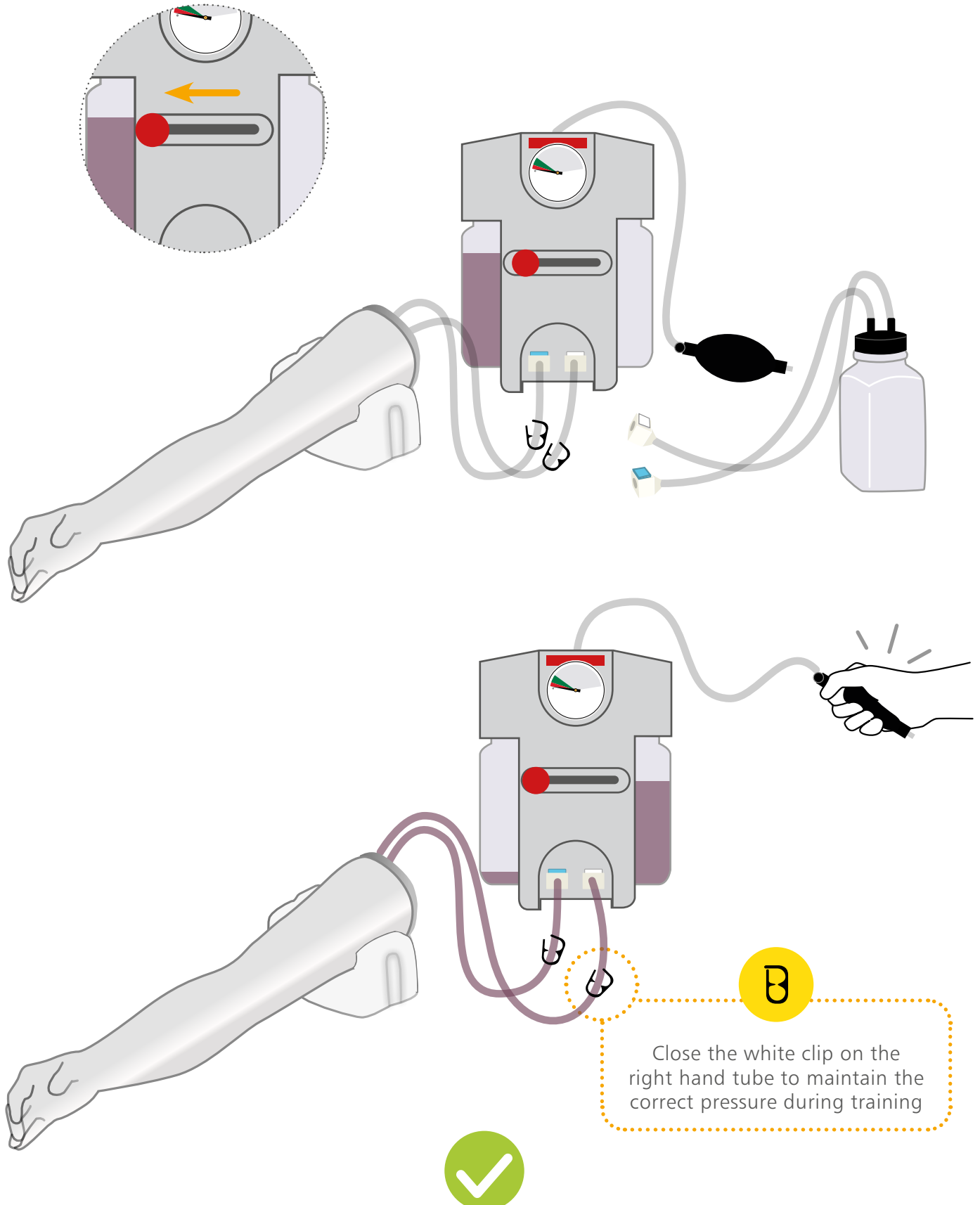
SET UP

FILLING THE FLUID UNIT



SET UP

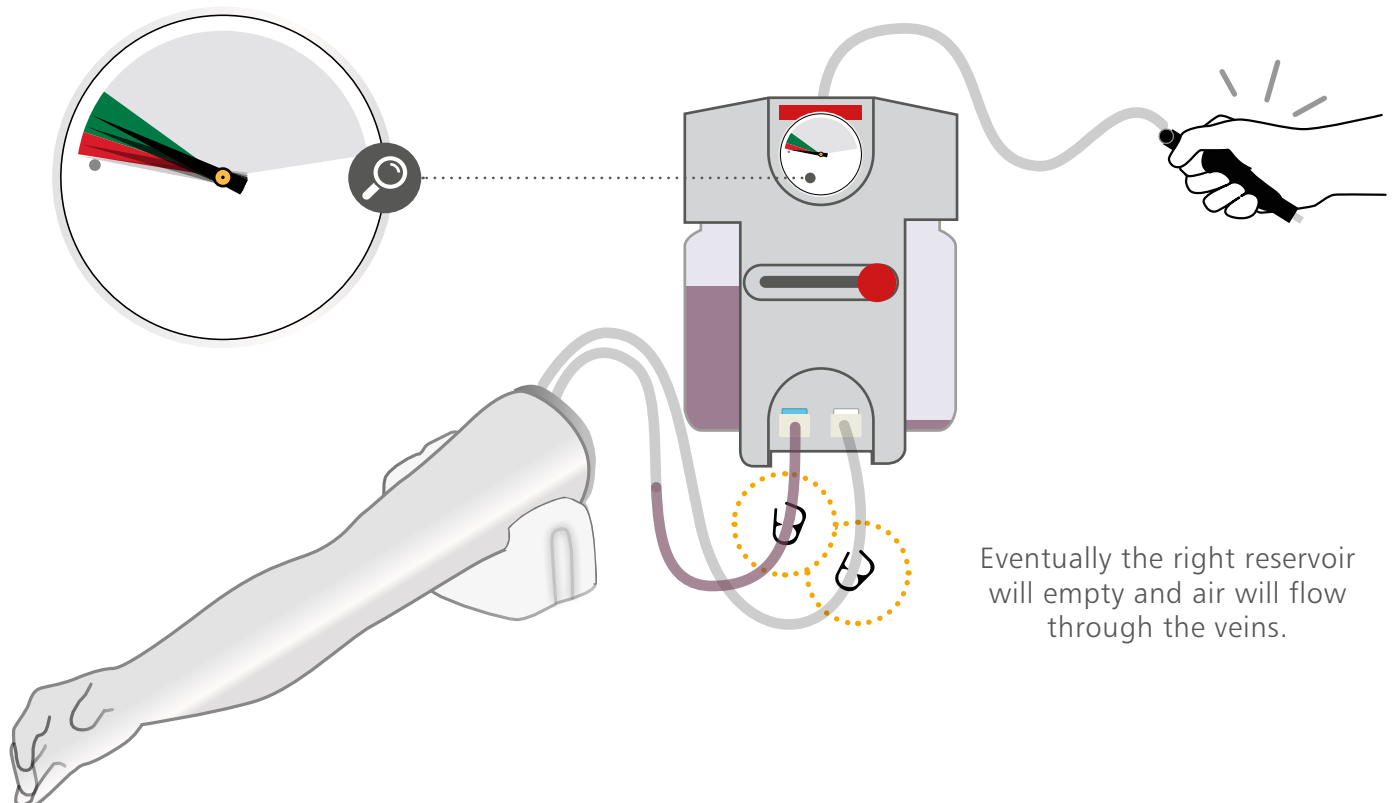
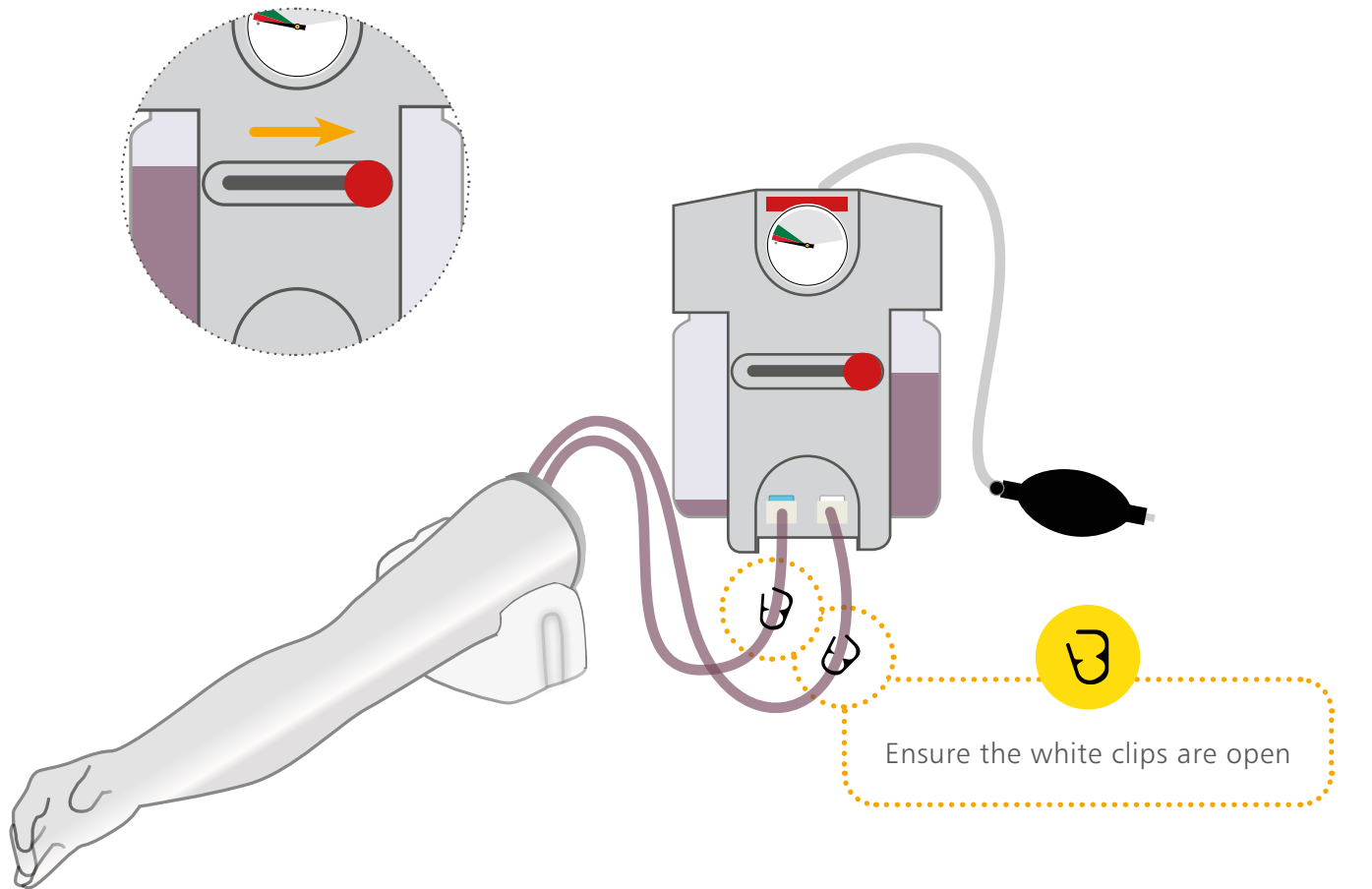
FILLING THE VEINS



The Arm is ready to use

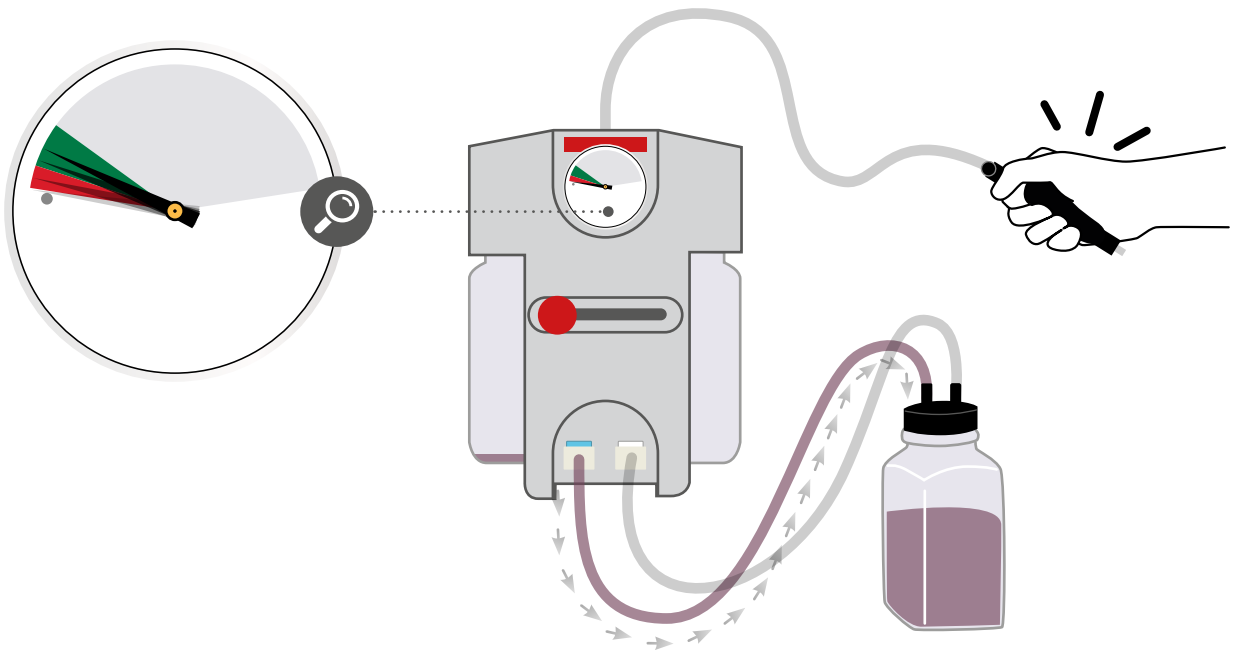
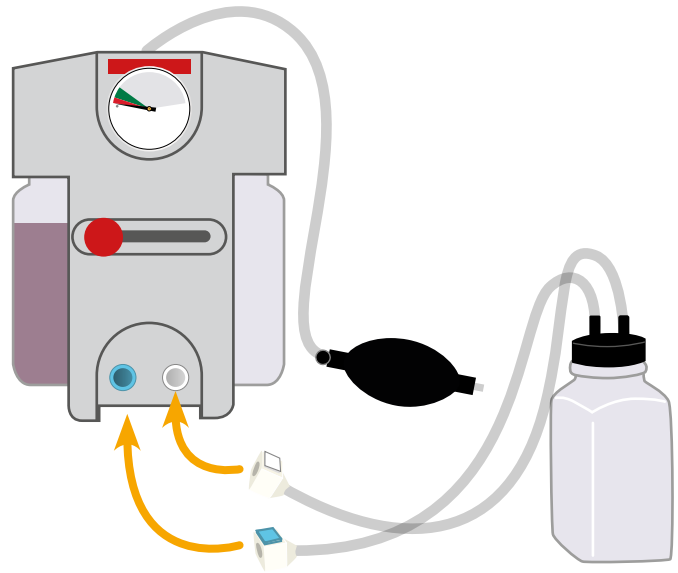
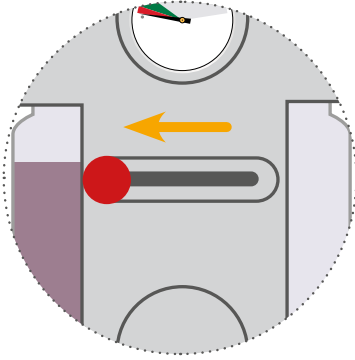
SET UP

EMPTYING THE VEINS



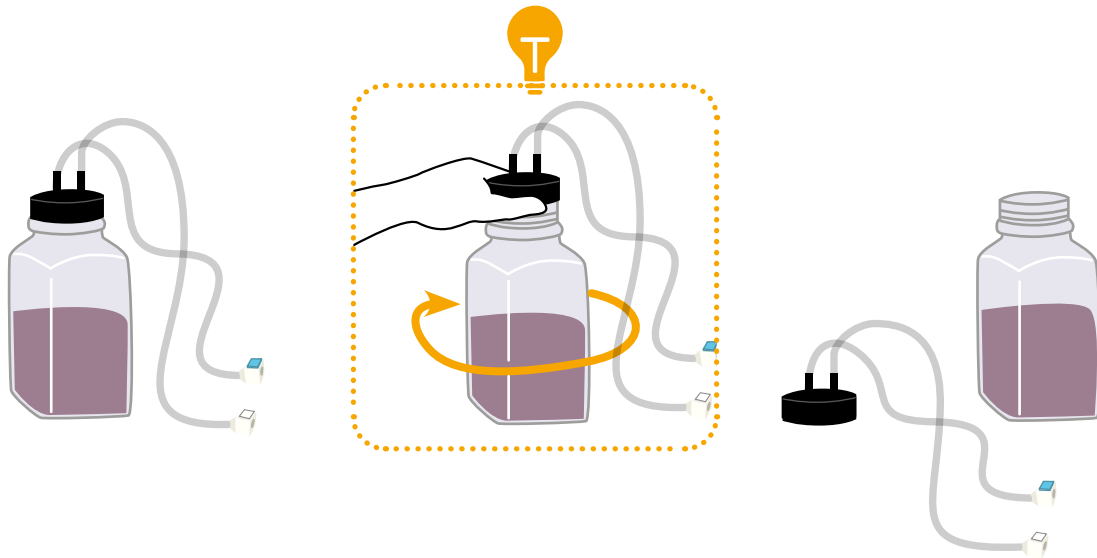
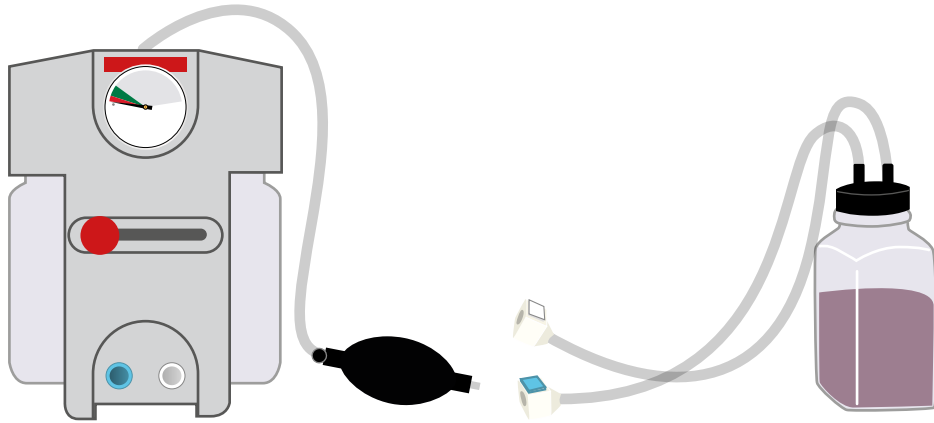
SET UP

EMPTYING THE FLUID UNIT



SET UP

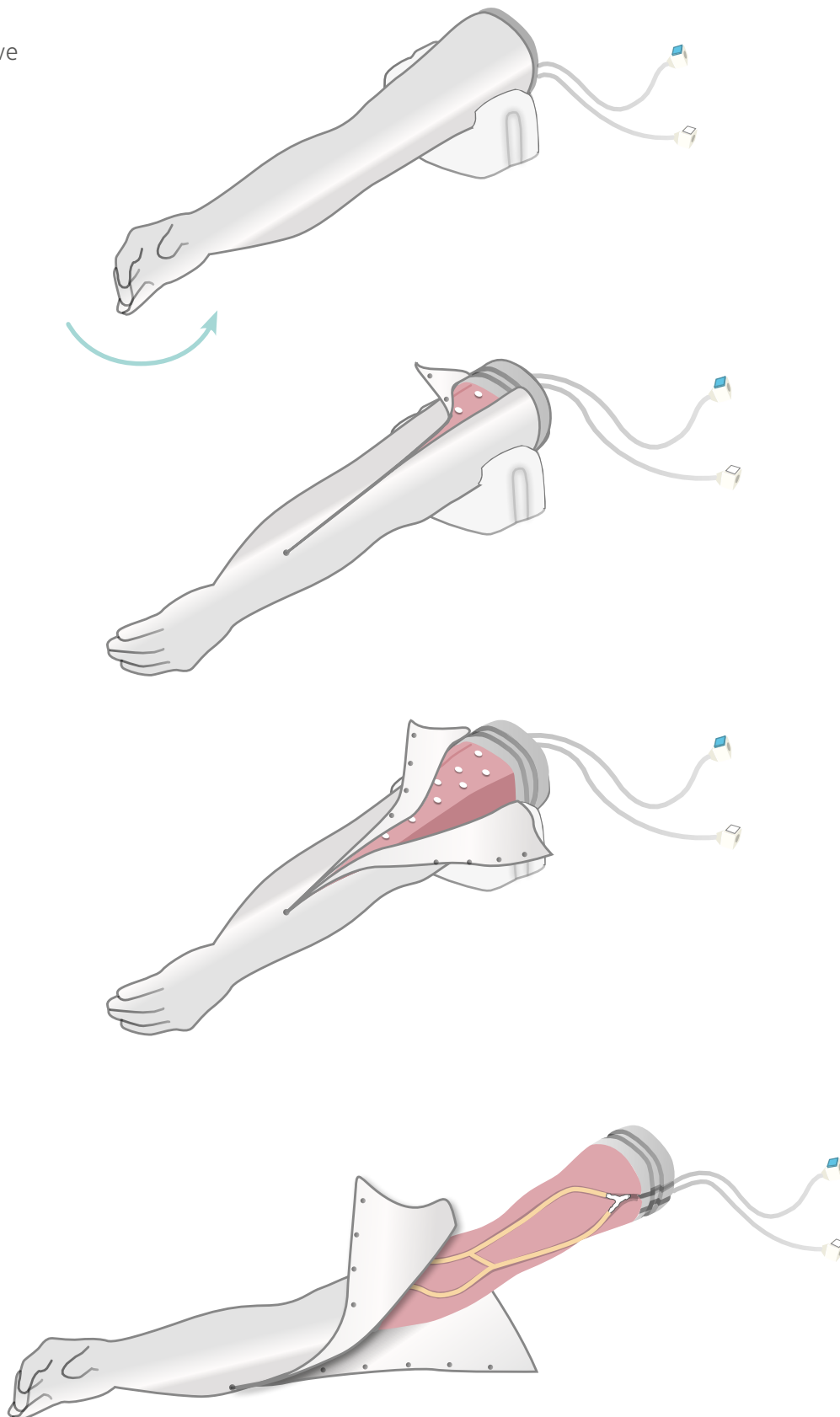
EMPTYING THE FLUID UNIT



SET UP

REMOVING/RE-ATTACHING THE SKIN

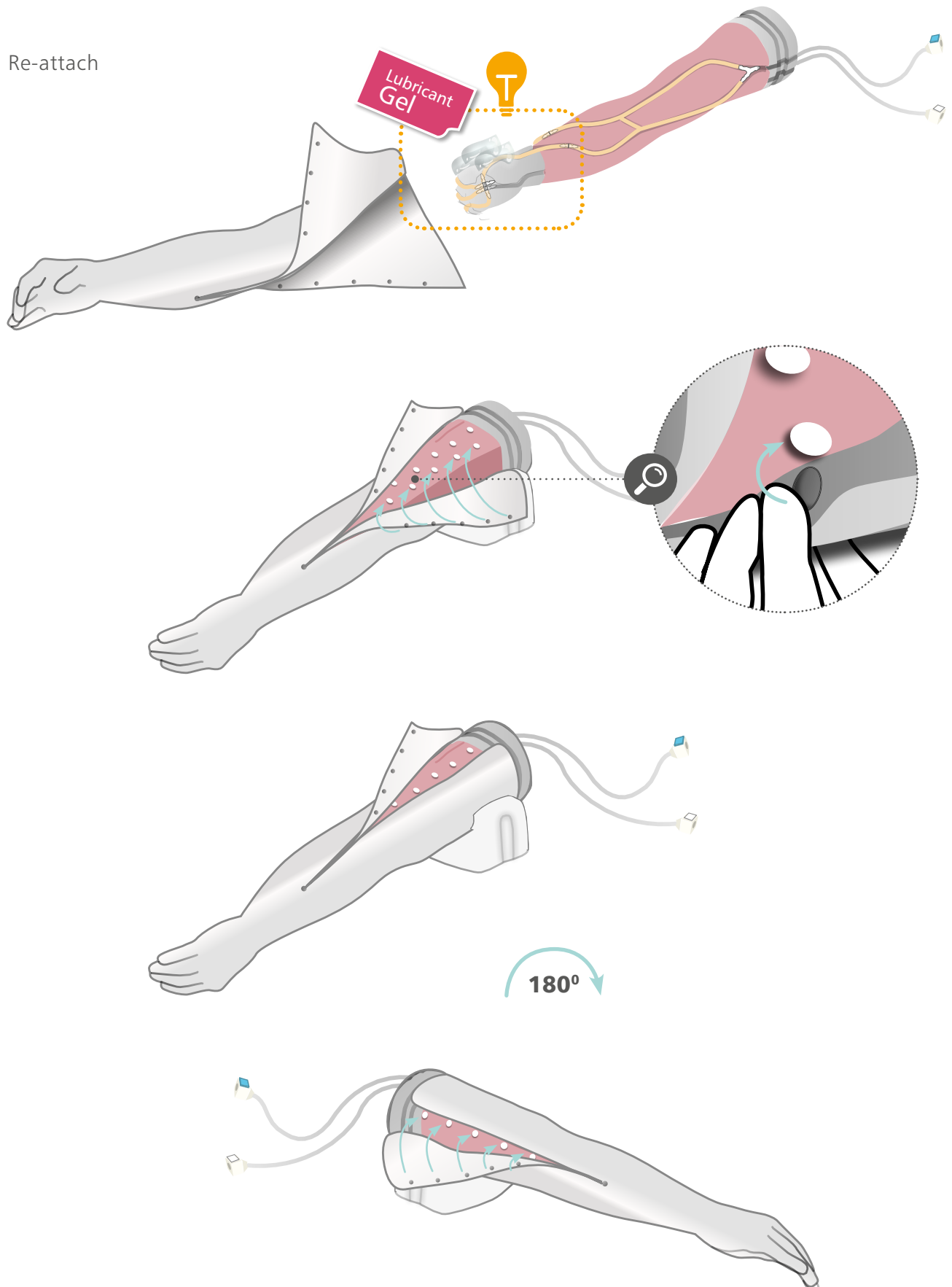
Remove



SET UP

REMOVING/RE-ATTACHING THE SKIN

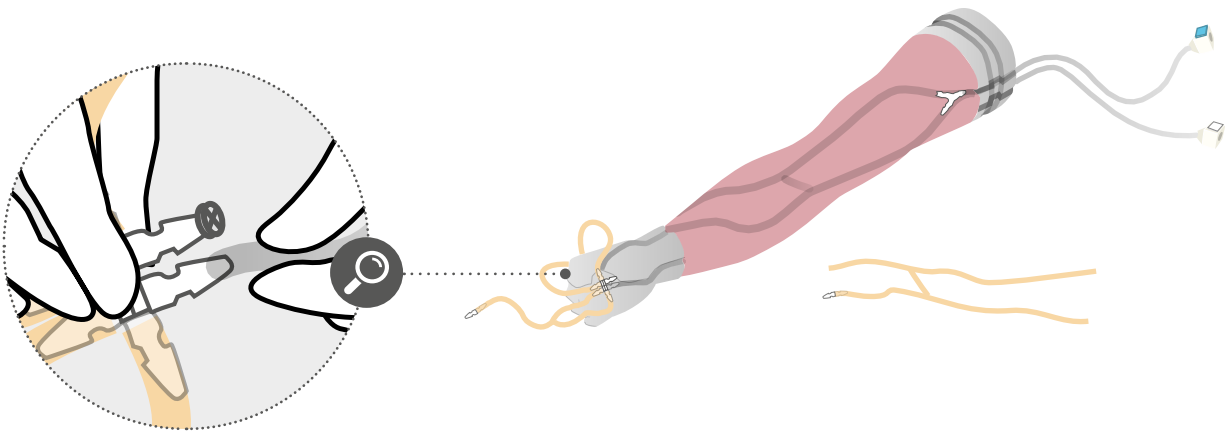
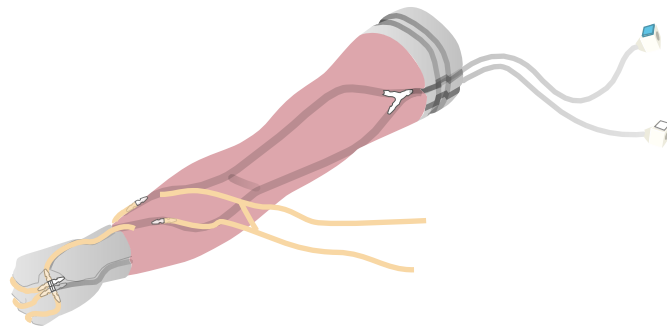
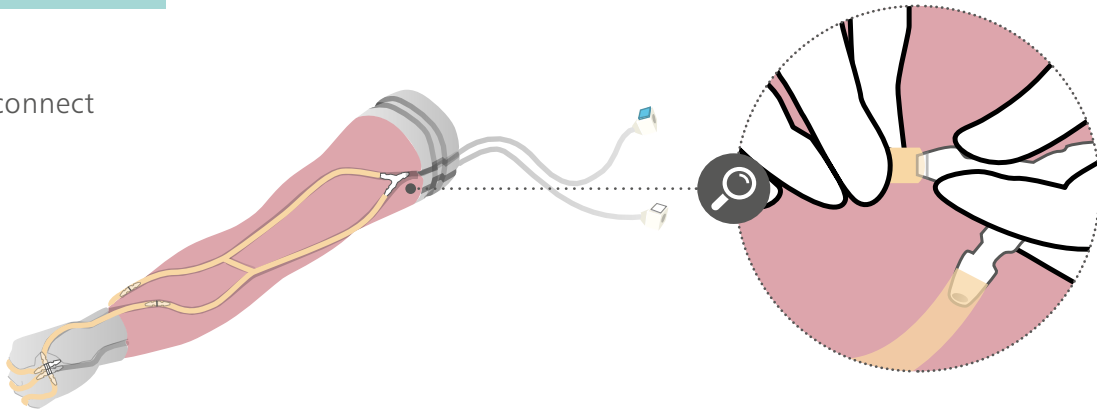
Re-attach



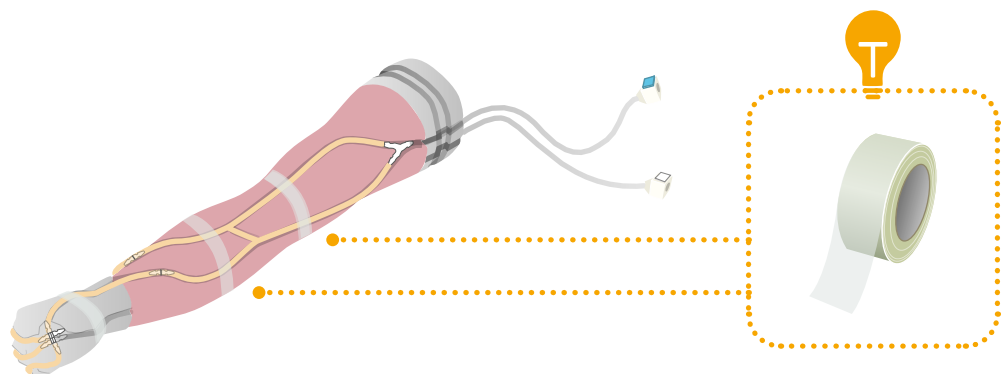
SET UP

CHANGING THE VEINS

Disconnect



Attach new veins

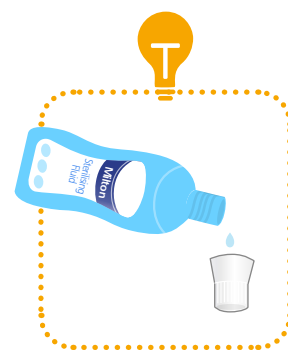


CARE & MAINTENANCE

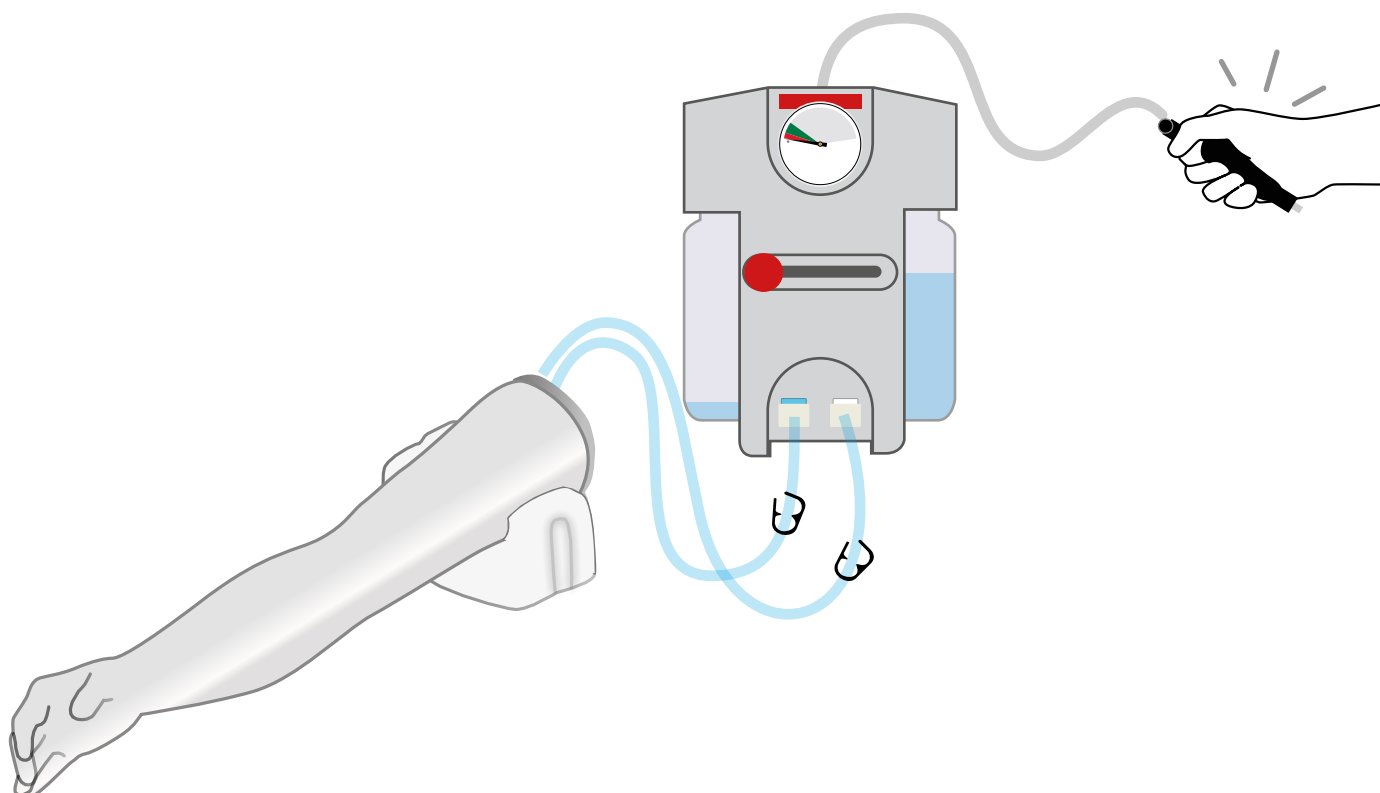
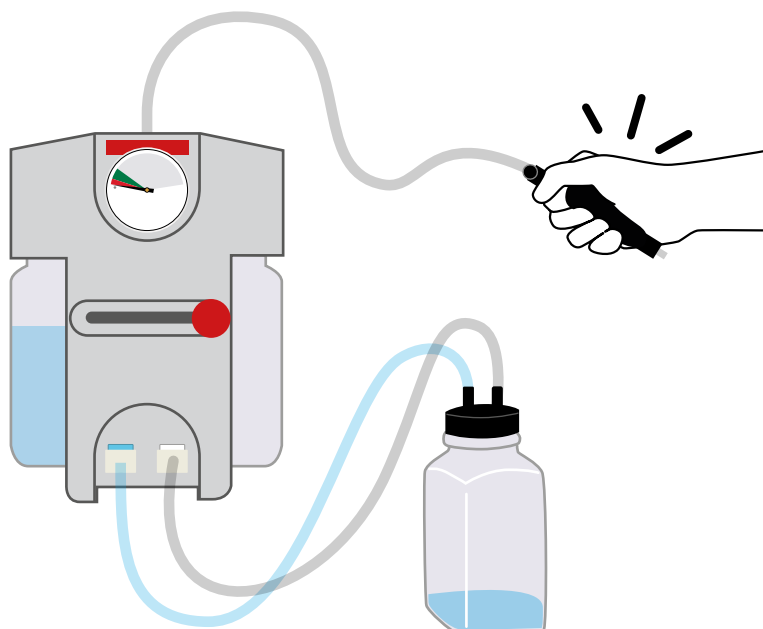
CLEANING THE VEINS

Prime the veins with water

Follow the process on pages 6-9



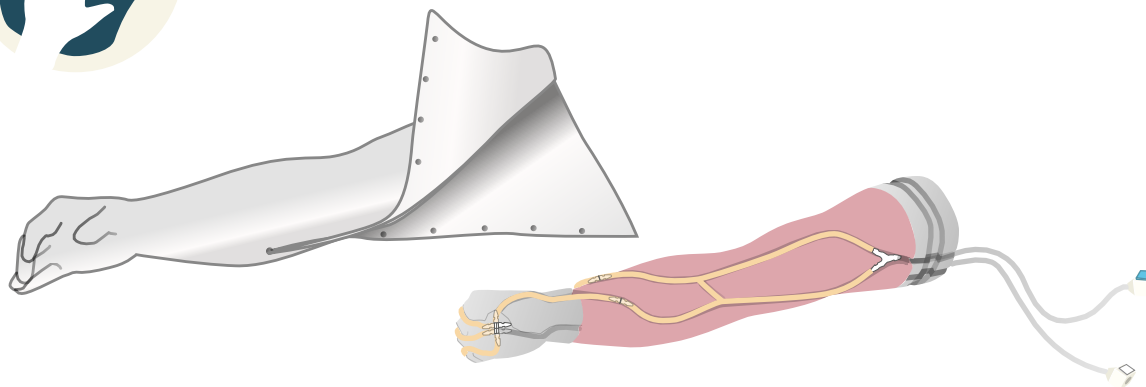
For a more thorough clean



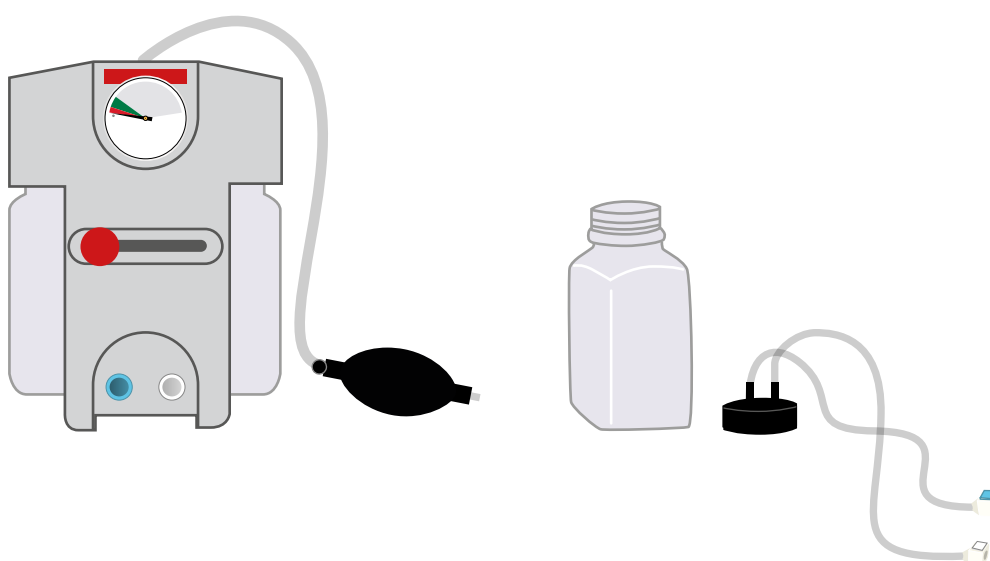
CARE & MAINTENANCE

BEFORE STORAGE

Clean the product with a damp soft cloth or sponge, using only warm water with mild detergent



Make sure the fluid unit and veins are empty prior to storage/transport



YOU MAY
ALSO BE
INTERESTED IN...

OPTIONAL TO PURCHASE:

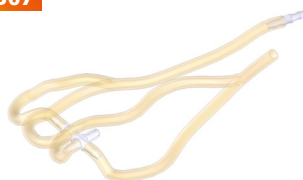
ACF Vein Module (x2)

70306



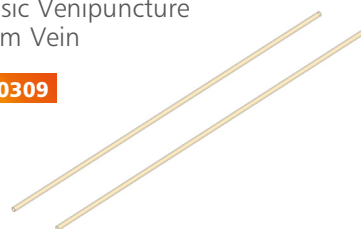
Metacarpal Vein Module (x2)

70307



Basic Venipuncture
Arm Vein

70309



Basic Venipuncture
Arm Vein - Latex Free

70310



Limbs & Things
Lubricant

60869



Carry Case

00301

